

People Make It Work!



2005 Report to the Community

Lititz Borough



Warwick Township

More than five years ago, we asked for your input to improve our communities through development of a Joint Strategic Comprehensive Plan. Your participation mattered then, and it matters now. This report tells you what we have done as a result of the planning process, and the enclosed survey asks for your help in determining our future direction as we update the plan. In an age when government often is criticized as being unresponsive to the needs of the people, we have and will continue to respond efficiently.

Please be sure to complete and return
the enclosed survey.

In late 1999, Lititz Borough and Warwick Township adopted a Joint Strategic Comprehensive Plan, the result of 18 months of cooperative effort and citizen input in a community-based planning process. The Plan included four initiatives: community services and facilities, physical development, infrastructure development and economic development. Thirty-four strategies and actions were designed to meet the community's vision for "a dynamic and viable community, protected and enhanced through collaborative and cooperative efforts, in which all members flourish." During the past five years, our partnership, which includes the Warwick School District has worked to implement the plan. Now, it is time to report on our progress and to get your input on our future direction.

People Make It Work

Contents

Traffic Reduction & Transportation Improvements.	1
Land Preservation & Growth Management	2
Safety Enhancements	3
Maps	4-5
Water Resource and Watershed Protection	6
Recreational & Quality of Life Opportunities.	7
Economic Development	8
More Efficient Local Government	9

Lititz Borough
7 South Broad Street.
Lititz, PA 17543
717.626.2044. Fax: 717.626.1329
www.co.lancaster.pa.us/lititz

Warwick Township
315 Clay Road P.O. Box 308
Lititz, PA 17543-0308
717.626-8900 Fax 717.626.8901
www.warwicktownship.org

You asked for traffic congestion reduction & transportation improvements.
We delivered.

As they do in many communities, transportation issues rank high on the list of community concerns. We delivered more than 60 miles of transportation improvements, valued at \$7.2 million, in Lititz and Warwick during the past five years, and more enhancements are on the way.

- ✓ Our new Regional Transportation Advisory Committee meets quarterly to make recommendations on traffic-related issues.
- ✓ A Traffic Management & Monitoring Program monitors and assesses needs for improvements throughout the region.
- ✓ Lititz received a \$70,000 grant to improve signal timings.
- ✓ In partnership with PennDOT, Warwick received \$1.8 million in funding to widen Route 501 from Owl Hill Road to the Shoppes of Kissel Village and the Millport intersection. Funding currently is on hold for the redesign of Route 501 from Wynfield to Newport Road.
- ✓ We installed preemption devices on signals along the Route 501 and Main Street/Rothsville Road corridors to assist Emergency Service Team response.
- ✓ A number of new signals were installed throughout the region, such as at Wynfield Drive/Furnace Hills Pike, Oak Street/Newport Road, and Highlands Drive/Millport Road.
- ✓ Rothsville Road corridor improvements include an advisory signal at the Rothsville Fire Company entrance, and a signal at Church Street is to be installed.
- ✓ Warwick's new campus industrial zoning requires a dedicated collector street and internal street network to help reduce future congestion.
- ✓ The expanded trail system has pedestrian links to residential communities and will connect to the Lititz sidewalk system.
- ✓ Lititz was awarded a \$212,000 Hometown Streets Grant to improve pedestrian safety, and design is underway with project construction expected in 2006-2007.
- ✓ The rerouting of Route 772 now is included in the Lancaster County long-range plan (2005-2030), and a feasibility study is underway



You asked for land preservation & growth management.

We delivered.

South Central Pennsylvania, including Lititz and Warwick, has been the site of some of the most rapid development in the nation during the past decade, especially in housing. But, we were able to slow the rate of growth to a more manageable level. Farmland and open space preservation, changes in the Urban Growth Area (UGA) and rezoning are among the approaches.

- ✓ Our aggressive farmland and open space preservation efforts are yielding results. More than 2,265 acres now are preserved, including 705 acres preserved through the transferable development right (TDR) program.
- ✓ We are using several techniques to conserve farm and open land, including the Lancaster County's agricultural conservation easements, Pennsylvania's Agricultural Security Program and TDRs.

Warwick has one of the state's most successful TDR programs. To preserve farmland, the TDR program permanently transfers densities and development potential from unprotected agricultural land to a Campus Industrial Receiving Area. Income (approximately \$398,000) generated from the sale of TDRs, such as from Heart of Lancaster Complex, is used for additional farmland preservation.

"Warwick's municipal-level TDR program is a national model – by innovating to encourage a different mix of development options and by playing an active role in facilitating transactions. Creating incentives to attract developers to invest in and build in the industrial park really helps set you apart from conventional programs."

Julia Freedgood,
Director of Technical Assistance Services
at the American Farmland Trust.



- ✓ We further refined our UGA, established in 1993. The area is designed to steer growth and development within its borders and to provide buffers between zoning regions. Our research determined that more acreage (500 acres) was in the UGA in 1999 than was necessary for expected residential growth during the next 10 years.
- ✓ Areas that are needed to protect habitats and natural resources were placed into Conservation Corridors.
- ✓ Currently, we are working on a conservation subdivision ordinance that will help conserve open space.

You asked for safety enhancements.
We delivered.

South Central Pennsylvania, including Lititz and Warwick, has been the site of some of the most rapid development in the nation during the past decade, especially in housing. But, we were able to slow the rate of growth to a more manageable level. Farmland and open space preservation, changes in the Urban Growth Area (UGA) and rezoning are among the approaches.

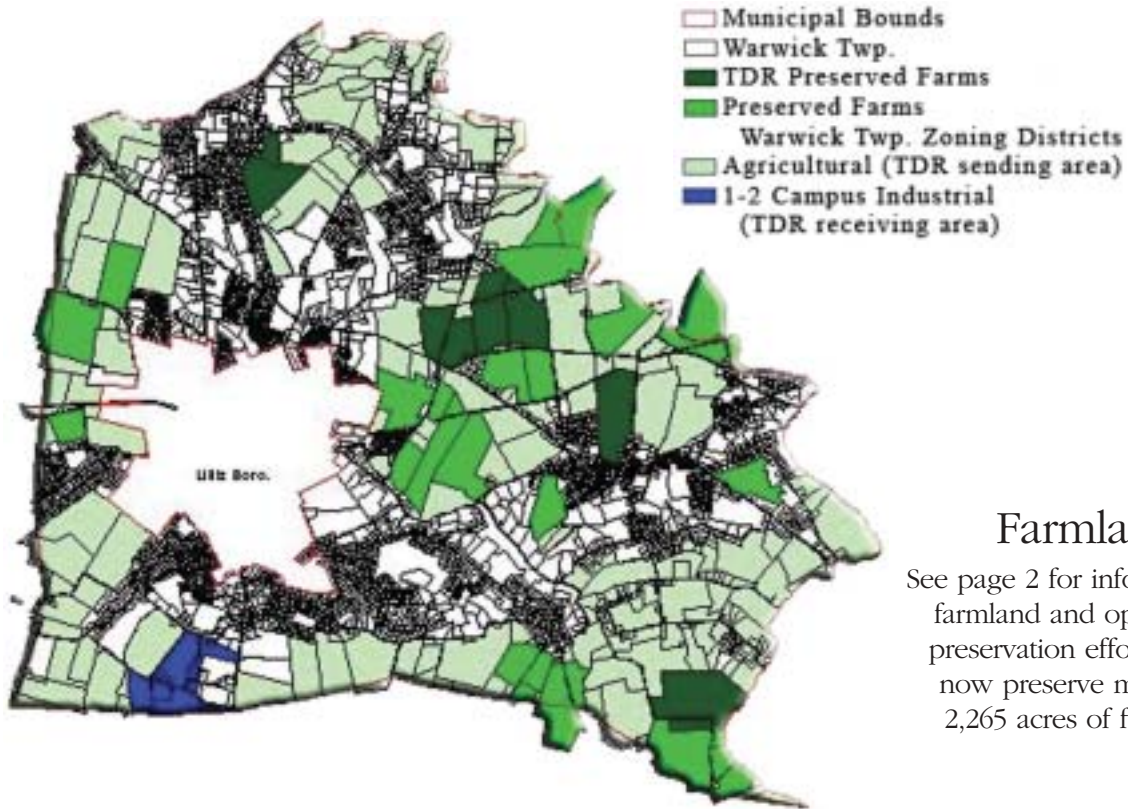
- ✓ In 2001, we formed the Warwick Emergency Services Alliance (WESA) using a Circuit Rider Grant from the Pennsylvania Department of Community & Economic Development. Composed of volunteers from Brickerville, Brunnerville, Lititz, and Rothsville fire and ambulance services, WESA promotes safety and coordinates fund raising as well as grant applications.
- ✓ The Lititz and Warwick police departments have a mutual aid agreement to assist response timing and to operate more efficiently, including working on joint training exercises.
- ✓ A pedestrian safety program was initiated in Lititz.
- ✓ Warwick's police department was the first in Lancaster County to be accredited by the Pennsylvania Law Enforcement Accreditation Commission, and Lititz police department accreditation is underway
- ✓ WESA and Lititz Fire Company #1 created a fund to purchase and distribute smoke detectors through the Amanda Schoenberger Memorial Smoke Detector Program.
- ✓ Lititz and Warwick instituted the Community Watch Programs.
- ✓ Lititz instituted a Community Crime Prevention Officer.
- ✓ Lititz joined the National Night Out Coalition Program and had its first night out block party, which is expected to be an annual event.



“WESA has been promoted by DCED as a model for regional emergency services delivery in Pennsylvania. Through the dedication and commitment on the part of many individuals and organizations, WESA has set a standard as the first organization of its kind in the state, and we (DCED) support its concept, mission and continued success for the service to residents of the region.”

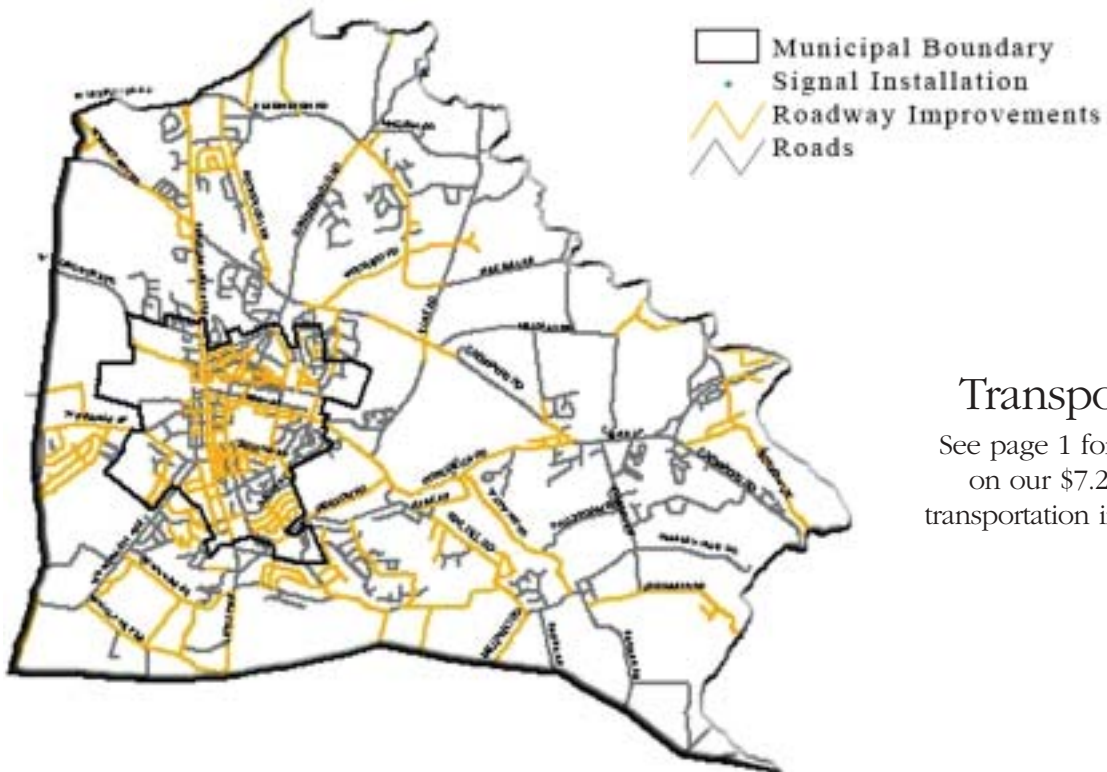
Dean Fernsler, Local Government Policy Manager,
Governor's Center for Local Government Services,
Pennsylvania Department of Community & Economic Development

MAPS



Farmland

See page 2 for information on farmland and open space preservation efforts, which now preserve more than 2,265 acres of farmland.



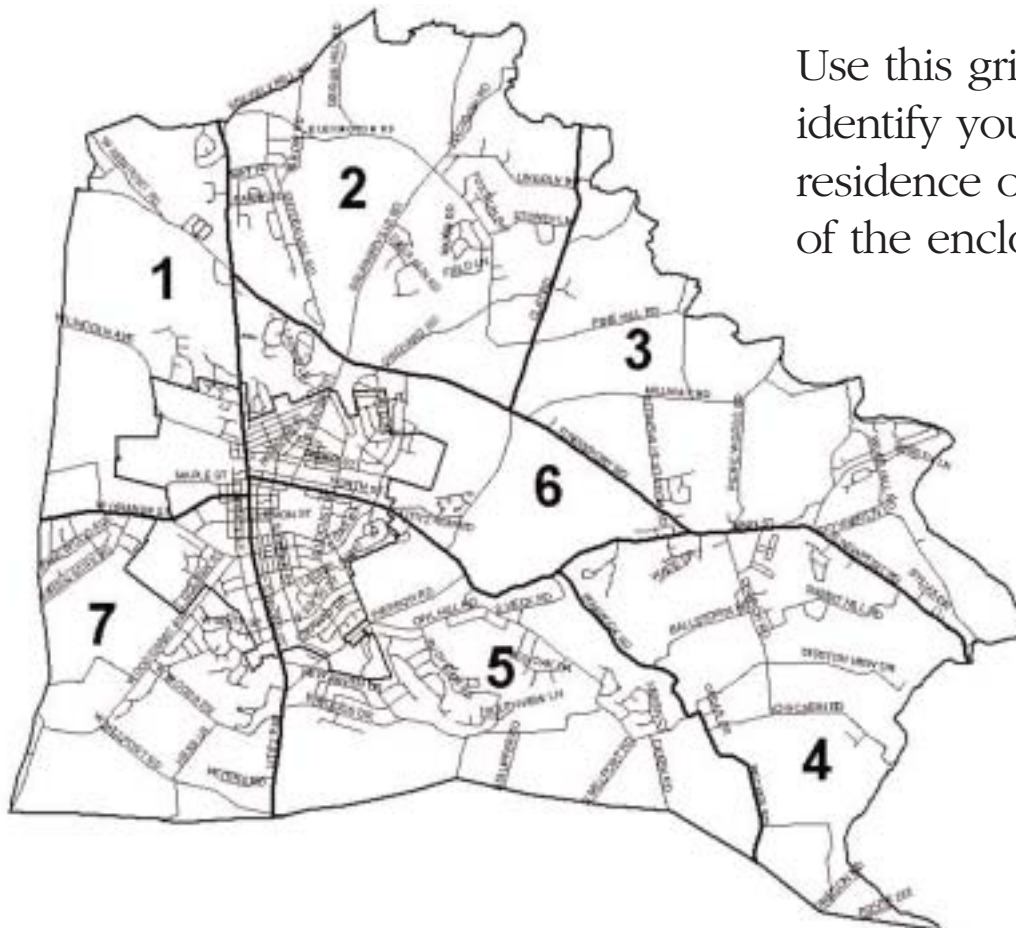
Transportation

See page 1 for information on our \$7.2 million in transportation improvements.

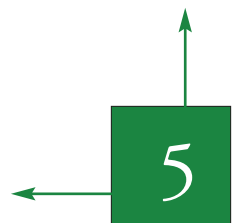


Lititz Bike & Pedestrian Trails

See page 7 for more information on recreational and quality of life improvements.



Use this grid map to identify your area of residence on question #1 of the enclosed survey.



You asked for water resource & watershed protection.

We delivered.

We cannot take our water or watersheds for granted. In the past five years, we made major accomplishments in these areas. Our watershed program won state and national acclaim, including the CF Industries, Inc. National Watershed Award, the Governor's Award for Environmental Excellence, and the federal Environmental Protection Agency's Watershed Showcase, which is given to the nation's top 12 watersheds.

- ✓ We established a Regional Wellhead Protection Program. It is certified by the Pennsylvania Department of Environmental Protection (DEP), as we were the 8th and 9th – out of thousands of municipalities across the state – to achieve this distinction.
- ✓ Warwick Township Municipal Authority (WTMA) won a certificate of recognition from the PA Rural Water Association for the program. New signs alert people that they are in a water supply area and should take extra care to avoid polluting the supply.
- ✓ Lititz, the Pennsylvania Environmental Council and Pfizer, Inc. put together a natural stream restoration nutrient trade between Lititz and Pfizer that resulted in the renovation of New Street Park. In return for pollution reduction credits, Pfizer provided \$80,000 to the borough to reshape a portion of the Santo Domingo Creek and remove silt build up. The effort was commended by DEP and Governor Edward Rendell as a model for other cooperative efforts.



In conjunction with a new subdivision plan, WTMA is developing a new well and connecting it to the Lititz public water supply to add one million gallons of water a day to the system, as the municipalities continue to strive for high quality water at a reasonable price. In addition, we:

- ✓ Purchased emergency spill supplies and implemented an agricultural management program using a \$26,000 DEP grant.
- ✓ Provided a water supply to the John Beck Elementary School along with Village of Brunnerville residents using a \$190,000 Community Development Block Grant.
- ✓ Initiated a capping program to reduce infiltration into the sewer system.
- ✓ Took steps to boost security in accordance with Department of Homeland Security standards.
- ✓ Made a \$4.5 million upgrade to the Maple Street Water Filtration Plant to meet future demand and to meet regulatory standards in the federal Safe Drinking Water Act.

“The Lititz Run Watershed Association pioneered techniques for watershed restoration built on the power of partnerships that involve everyone in the watershed. They blazed a trail many others have followed.”

David E. Hess, former Secretary, DEP, and a Lancaster County native

To help address potential pollution, Warwick enacted an ordinance that mandates pumping of on-site septic systems every three years, based on a plan that divides the township into three areas and licenses septage haulers.

Lititz, Warwick and 11 other municipalities in Northern Lancaster County are among the first in the state to participate in a water budget study to help long-term management of water resources. The study includes data collection from private wells and maps groundwater levels to determine if levels meet current and future demands.

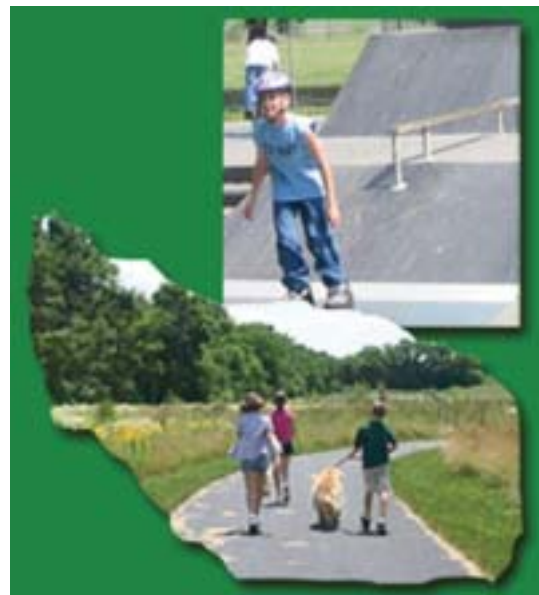
We endorsed the strategy of the Lititz Run Watershed Alliance (LRWA), which continues to do stream bank restoration in the region, such as the Donegal Chapter of Trout Unlimited's work on stream bank restoration along Lititz Run. The LRWA received approximately \$850,000 in funding toward its watershed protection and restoration efforts.

Watershed Day is an educational program for fifth grade students in the Warwick School District and stresses the importance of watershed protection and restoration as well as the interrelationship between the Lititz Run Watershed's water quality and our downstream neighbors, a relationship that ultimately affects Chesapeake Bay water quality.

~~You asked for more recreational & quality of life opportunities.~~
We delivered.

Quality of life benefits and recreation are important determinants in why people want to stay in or move to this region.

The Warwick Regional Recreational Commission (WRRC) was established, with help from a \$7,500 Pennsylvania Department of Conservation & Natural Resources (DCNR) grant, and now coordinates programming, field use, as well as park maintenance and services. In this process spearheaded by the township, borough and Elizabeth Township, we secured funding for and hired a recreation and parks director to support the WRRC, which also includes the Warwick School District and the Lititz Community Center.



We are implementing a Regional Comprehensive Parks, Recreation and Open Space Plan, which includes Elizabeth Township and was developed under a \$50,000 DCNR grant. In addition, we:

- ✓ Acquired the 15-acre Forney Field with grant funds and donations from the Lititz Youth Soccer Club, the Lancaster Polo Club, the Jerusalem Evangelical Lutheran Church, and heirs of the Ben Forney estate.
- ✓ Developed the 10-acre Bonfield Elementary School Recreational Fields in cooperation with the school district and Newport Square developer Michael Glass. The field links to the Lititz/Warwick Trailway and Newport Square trails.
- ✓ Secured a \$100,000 DCNR grant for greenway and trail feasibility and did a feasibility study on the rail-to trail extension from Lititz to Ephrata.
- ✓ Secured \$25,000 in grants for Lititz to build a new skate park near the Lititz Springs Pool and Lititz Community Center.
- ✓ Incorporated trails into land development plans, including those for Newport Square and Heart of Lancaster Hospital.
- ✓ Warwick secured a \$170,000 DCNR grant to expand the Municipal Campus, which includes an additional pavilion, a multi-purpose field, sand volleyball courts and a new trail system.

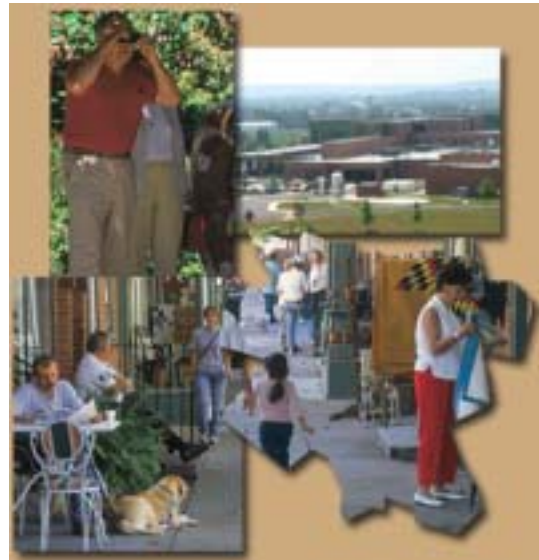
You asked for economic development.

We delivered.

Promoting economic development is a key factor in enhancing and diversifying our tax base as well as creating job opportunities. Our plan focuses on Lititz as the retail core of the partner communities, with industrial development at its edges surrounded by agriculture.

During the past five years, we:

- ✓ Established a Regional Economic Development Committee in an effort to ensure continued downtown viability. The committee meets quarterly to make recommendations on issues of economic development.
- ✓ Increased industrial and service centers, clustering them to generate the economic benefit without some of the common negatives.
- ✓ Received a \$212,000 Hometown Streets grant to help preserve Lititz and to use for crosswalks and other amenities. Design is underway with construction set for 2006-2007.
- ✓ Through the TDR program, designated a new Warwick zoning for campus industrial. Warwick took an active role in facilitating transactions that transfer densities and development to the Campus Industrial zoning district.
- ✓ Studied downtown Lititz parking and concluded it would benefit from better management and signage.
- ✓ Developed Lititz design guidelines to mirror architectural styles and to permit innovation in meeting parking needs, including shared parking.
- ✓ Lititz received a \$10,500 grant to complete a market study focusing on ways the borough can retain business and market to new business, as well to determine the appropriate business mix.
- ✓ Identified the deteriorated rail freight station as a potential farmers' market.
- ✓ Began developing a grant application for a Lititz downtown vitality project under the state's Main Street program, with a goal to redefine the downtown and fund a manager to coordinate business outreach. A \$8,500 grant provides funding for a consultant to lead the project.
- ✓ Added many sites to the Lancaster County Heritage Program to promote additional tourism.
- ✓ Secured a \$4,000 grant for a way finding sign project in Lititz to be undertaken in 2006.
- ✓ Began the process of rezoning two areas to provide for mixed-use in Lititz.



You asked for better, more efficient local government.

We delivered.

Working together helps Lititz and Warwick better serve our residents and tax payers.

Our tax base has benefited from an increase in industrial and service development. Since residential development typically pays less in local taxes than it consume in services, including public education, diversification of the tax base is critical. For example, the Warwick TDR Program increases commercial/industrial development to diversify the tax base by transferring densities and development potential.

Joint efforts, such as the Warwick Regional Recreational Commission and the Warwick Emergency Services Alliance, save money by reducing duplication of services and improving the economy of scale for joint purchases.

- ✓ The municipalities now meet with the school district on a regular basis and include representatives of the Lititz Public Library and Lititz Community Center in those sessions. Objectives include ways to diversify the tax base, share resources and monitor growth.
- ✓ We are communicating more efficiently by participating in the school district newsletter to help inform the community of opportunities and concerns.
- ✓ In 2003, Lititz and Warwick won the county's Smart Growth Leadership Award for our work on the Joint Strategic Comprehensive Plan and other efforts, including joint mapping. The plan was seen as practical and relevant to encourage innovation to address issues with regional impact and implications. The action-oriented plan's objectives are continuously being defined and carried through.



Thanks to the extraordinary willingness of our community members to step up and help out, we have been able to harness volunteerism to help fuel our progress more efficiently. These volunteers include the:

- Regional Steering Committee for the Joint Comprehensive Strategic Plan
- Regional Economic Development Committee
- WESA
- WRRC
- Regional Transportation Advisory Committee
- Lititz Run Watershed Alliance and its members, as well as
- The many other individuals and organizations who have given their time and energy.

These are the people who really make it work.

Postal permittee
Warwick Township
315 Clay Road
Lititz, PA 17543-0308

PRSTD STD
U.S. POSTAGE PAID
Lititz, PA
Permit #

“People Make It Work!”

Photo Credits: Lancaster County Heritage Program, Lititz Borough and Warwick Township

Funding through the Pennsylvania Department of Community & Economic Development.

Lititz Borough
7 South Broad Street.
Lititz, PA 17543
717.626.2044. Fax: 717.626.1329
www.co.lancaster.pa.us/lititz

Warwick Township
315 Clay Road P.O. Box 308
Lititz, PA 17543-0308
717.626-8900 Fax 717.626.8901
www.warwicktownship.org