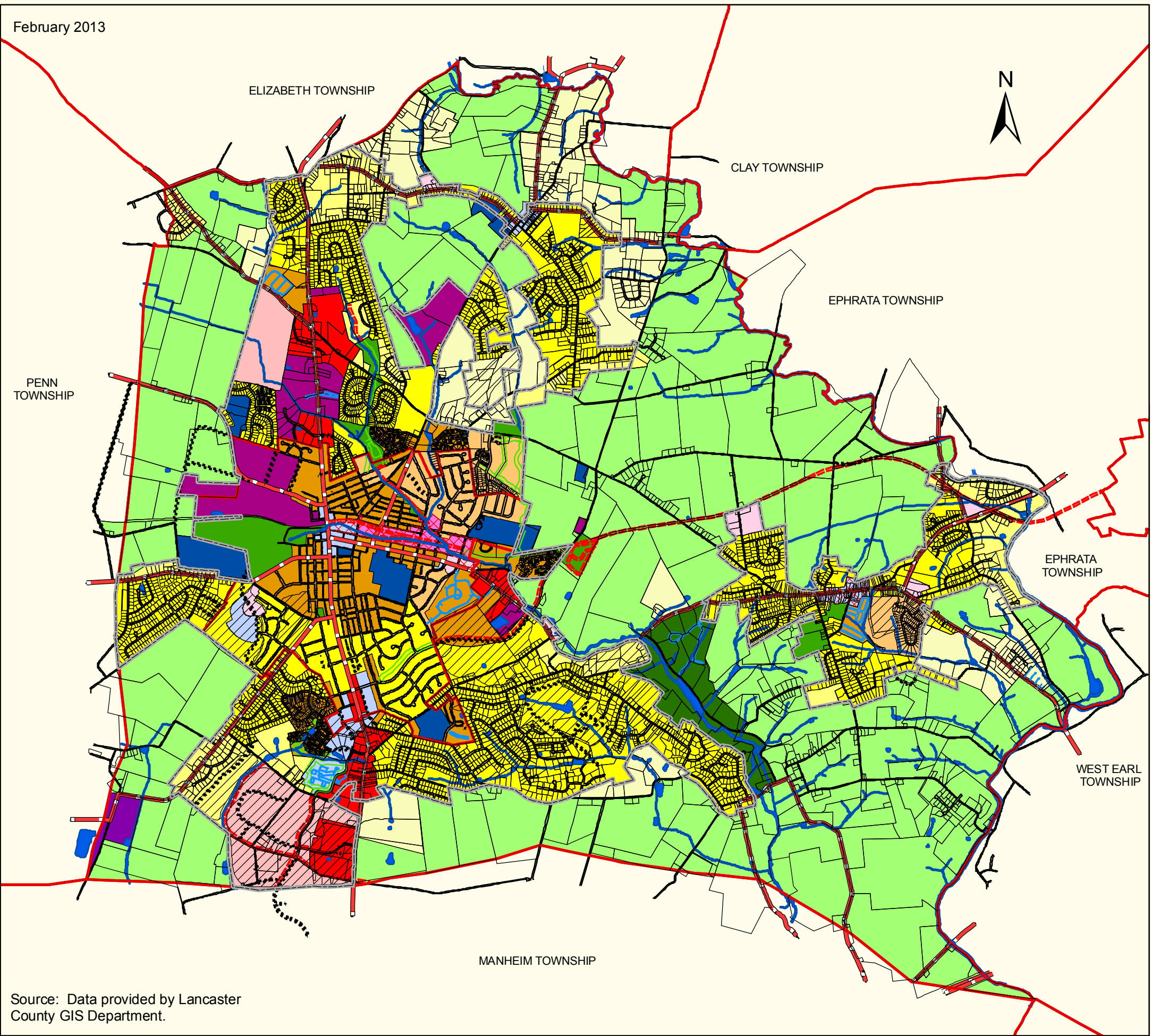


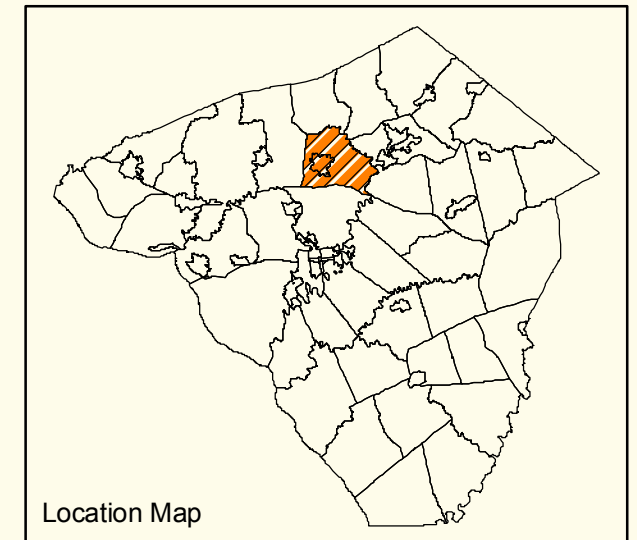
February 2013



Source: Data provided by Lancaster County GIS Department.

JOINT  
COMPREHENSIVE  
PLAN UPDATE  
ELIZABETH TOWNSHIP  
WARWICK TOWNSHIP  
LITITZ BOROUGH  
2017

Lititz Borough / Warwick Township  
Future Land Use Map



Legend

- |  |  |
|--|--|
| <ul style="list-style-type: none"><li>Hydrology</li><li>Private Roads</li><li>Proposed Roads</li><li>Reinvestment Areas</li><li>Planning Areas</li><li>Urban Growth Boundary</li><li>Existing Trail</li><li>Proposed Trails</li><li>State Road</li></ul> | <p><b>Future Land Use</b></p> <ul style="list-style-type: none"><li>AG - Agriculture</li><li>C - Conservation</li><li>RR - Rural Residential</li><li>LDR - Low Density Residential</li><li>MDR - Medium-Density Residential</li><li>MHDR - Medium/High-Density Residential</li><li>HDR - High-Density Residential</li><li>LI - Light Industrial</li><li>HI - Heavy Industrial</li><li>CI - Campus Industrial</li><li>EC - Educational Campus</li><li>NS - Neighborhood Support</li><li>GB - General Business</li><li>MU - Mixed Use</li><li>Q - Quarry</li><li>MCR - Municipal Campus/Recreational</li></ul> |
|--|--|

