



2006-2011

# REPORT TO THE COMMUNITY

Lititz Borough and Warwick Township



Building a stronger community, together!

The original Lititz-Warwick Joint Strategic Plan was adopted in December of 1999. In 2005, the first update was completed. During both phases, the plan contained an action program, outlining special goals to be completed within the next five years. This report tells you what we have completed as a result of the 2006-2011 phase.

The second update had four overall initiatives: community service and facilities, physical development, infrastructure development, and economic development. Overall strategies or action items were listed to meet the community's vision of balanced growth, preservation and quality of life, assets, and maintaining the community identity. During the past five years Lititz Borough, Warwick Township, and the Warwick School District have worked to implement the plan. Our progress is shown throughout this report as well as what objectives may want to be considered for the next five years.

## More Efficient Local Government

Check online for electronic copies of forms you may need!

Working cooperatively always allows Lititz and Warwick to better serve their residents. By working together, we can better serve you. The past five years have showcased several joint initiatives by reducing duplication of services, which in turn saves you money while getting more accomplished. Here are several initiatives accomplished during these last five years:

- ⇒ Both Lititz and Warwick have updated their websites to be more convenient and allow for easier access to forms. By posting documents online, thousands of dollars are saved in printing and distribution costs. Go to [www.co.lancaster.pa.us/lititz](http://www.co.lancaster.pa.us/lititz) or [www.warwicktownship.org](http://www.warwicktownship.org) for more information.



- ⇒ Warwick Emergency Services Alliance (WESA) updated their strategic plan in 2010. The all-volunteer emergency services model is by far the most cost-effective way of providing emergency services to our area. Please support all the hard work your local fire and ambulance providers do to keep you safe!

- ⇒ Warwick Township along with Clay and Penn Townships formed the new Northern Lancaster County Regional Police Department at the end of 2011. The new Regional Police Department provides 24 hour service to three municipalities. Improved service and long term cost efficiency was established.

‘Like’ us on Facebook!

- ⇒ Social media outlets are being established so that you can get up-to-date information sent straight to Facebook and Twitter.

We strive to make ourselves more available to better serve you in the fastest way possible.

Volunteers from our community, who are passionate about making a difference, are the ones who truly make this system work. Committees such as the Regional Coordinating, Economic Development, and Infrastructure Committees for the Joint Strategic Plan, WESA, Warwick Regional Recreation Commission, and the Lititz Run Watershed Alliance are just a few of these groups that do behind the scenes work to make our community an excellent place to live! Take time to thank them for what they do.



# REPORT TO THE COMMUNITY

## Safety Enhancements

South Central Pennsylvania, including Lititz and Warwick, has been the site of some of the most rapid development in the nation during the past decade, especially in housing. But, with excellent planning strategies we were able to slow the rate of growth to a more manageable level. Farmland and open space preservation, changes in the Urban Growth Area (UGA) and rezoning are among the approaches.

In 2001, we formed the Warwick Emergency Services Alliance (WESA) using a Circuit Rider Grant from the Pennsylvania Department of Community & Economic Development. WESA is comprised of volunteers from Brickerville, Brunnerville, Lititz, and Rothsville fire and ambulance services so that the community can be better served in emergencies.

- ⇒ The Lititz and Northern Lancaster County Regional Police Departments continue to cooperate with each other to operate more efficiently- providing for a community that is a safe place to live
- ⇒ The Borough continues to make “Pedestrian Safety” a priority, providing for in-road lighting as well as over-head lights at key pedestrian crosswalks. Crosswalk lines are constantly improved.
- ⇒ In 2011, the Lititz Borough Police Department became a fully accredited law enforcement agency under the direction of the Law Enforcement Accreditation Program sponsored by the Pennsylvania Chiefs of Police in 2008.



⇒ WESA is conducting a fire service level study. Completion of the study is anticipated in 2012.

⇒ Lititz Borough Police Department continues with community- based policing providing for foot patrols in the downtown shopping areas; a Crime Prevention Officer; and new in 2012 with the establishment of Event staff to assist with traffic control at the many

community events held in Lititz



- ⇒ Pictured to the right is Warwick’s new police force, the Northern Lancaster County Regional Police Department. Warwick Township, Penn Township and Clay Township have joined together on this initiative. This resulted in the reduction of duplicated services, improved the reach and consistency of the police force and saved thousands of dollars.



**Contact Information for  
NLCRPD:**

**860 Durlach Road  
Stevens, PA 17578  
717-733-0965**

<http://nlcrpd.org/>

# REPORT TO THE COMMUNITY

## Transportation Improvements

As gas prices skyrocket, transportation issues could not be of more importance to our communities. Lititz Borough and Warwick Township have both partnered with PennDOT to bring improvements and alternative routes, which in turn enhances drivability and reduces congestion. Following is a list of roadway improvements, at a value of over \$6 million, that have been performed throughout our region since the last Joint Strategic Plan update, and more improvements are on their way.



⇒ Rothsville Station & Millway Road Roadway was re-profiled for improved sight distance at intersection. Also significant drainage improvements, waterway construction, pavement repaving and widening, resurfacing, and installation of new drainage culvert was completed at Millway Road.

⇒ Performed a Truck Re-route Study for Route 772.

⇒ Bridge improvements on Front Street in Lititz and Clay Road in Warwick Township to prolong the lifespan of the bridges.

⇒ Improvements on Route 501 to make Shoppes at Kissel Village easier to access.

⇒ Resurfacing projects in Lititz, totaling over \$400,000

- ⇒ Re-timing of traffic signals completed to make travel along the Route 501 corridor at Millport Road, Peters Road and Owl Hill Road Intersections more efficient.
- ⇒ Connection of curb and sidewalk along Route 501 to Lititz Borough, linking residential communities with the downtown.
- ⇒ Traffic signal improvements at Route 501 and Wynfield Drive, 2nd Street and 6th Street along Broad Street, and Newport Road.
- ⇒ Constructed connector streets, such as the extension of Highlands Drive and 7th Street connection, to alleviate traffic and improve flow along major road corridors.
- ⇒ Reconstruction of the covered bridge on Log Cabin Road was done in effort with Lancaster County.
- ⇒ In partnership with PennDOT, funding was received to resurface Route 772 through Rothsville.
- ⇒ In 2007, Lititz made several major pedestrian crosswalk improvements using a Hometown Streets Grant along Broad and Main Street. The addition of crossing lights and well defined crossing areas, provided pedestrians with enhanced downtown safety.
- ⇒ A traffic signal was installed on Route 772 and Campus Drive.

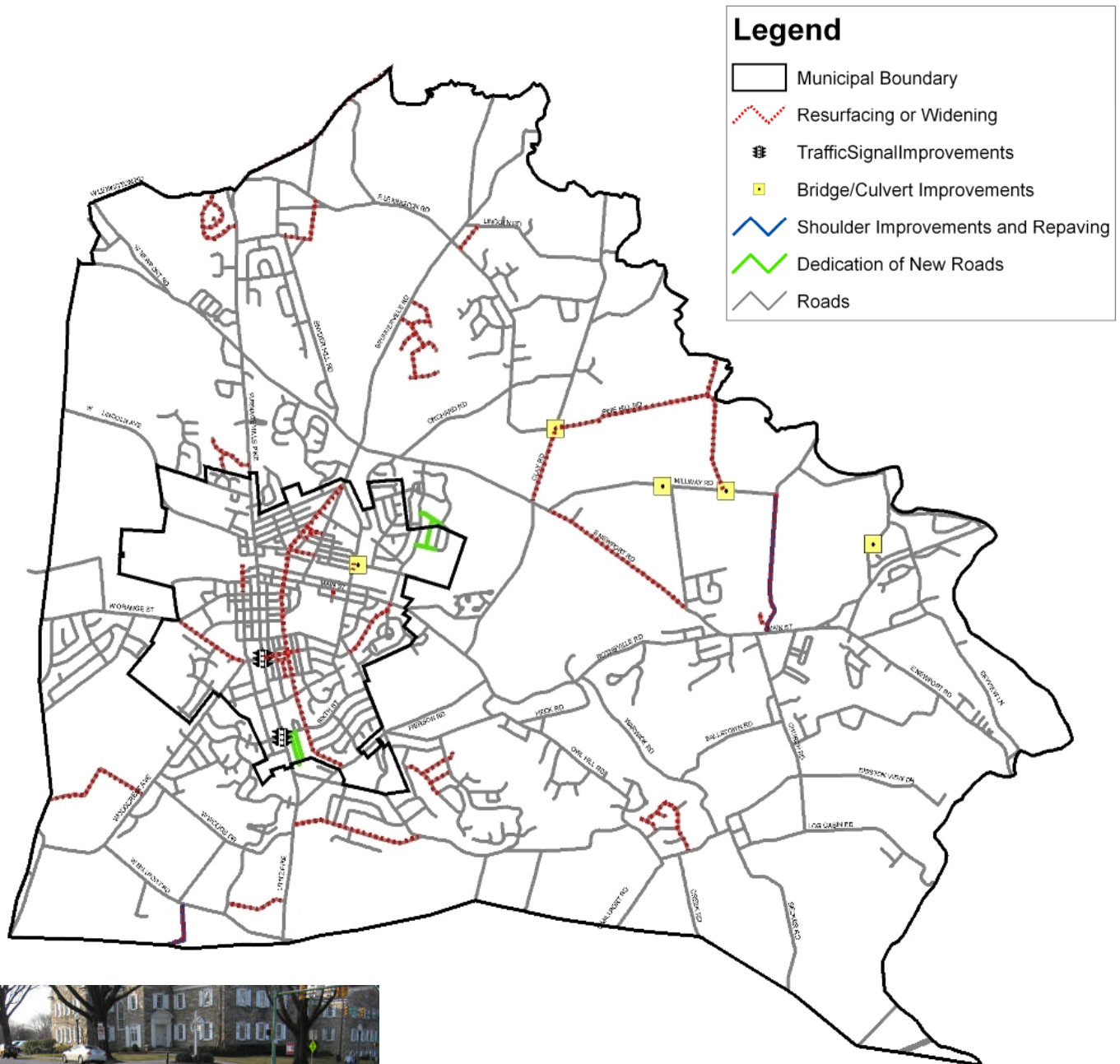


Pictured to the right are the Owl Hill Road improvements, just one example of over 6 million dollars in transportation improvements.



# REPORT TO THE COMMUNITY

## Transportation Improvements 2006-2011



Alternative modes of transportation are important to you. We have constructed the Lititz/Warwick Trailway and completed a feasibility study for a rail-trail from Lititz to Ephrata. Additionally, Lititz improved its crosswalks, and a textured crosswalk with solar-powered warning lights was installed along Clay Road at the Warwick Township Municipal Campus.

# REPORT TO THE COMMUNITY

## Economic Development

Visit [www.lititzpa.com](http://www.lititzpa.com) to find out about events and updated community information!

Promoting economic development is a key factor in enhancing and diversifying our tax base as well as creating job opportunities. Our plan focuses on maintaining a vibrant downtown, creating community service opportunities, expanding the development of industrial areas and preserving the agricultural economy.

- ⇒ Established a Regional Economic Development Committee in an effort to ensure continued viability. The committee works to recruit and retain business, and encourages major industry to our region, which means more jobs and more money for the local economy.
- ⇒ Lititz continually updates downtown market studies and business surveys to better focus on ways the borough can retain business, market to new business, and also to determine the appropriate business mix. By coordinating group advertising, retention outreach, and business planning, Lititz works to keep local businesses thriving.
- ⇒ Completed a Historic Inventory for Elizabeth Township, Lititz Borough and Warwick Township. The process involved over 10,000 parcels. You can access this interesting data at the Lititz Public Library.
- ⇒ Warwick Township expanded the Campus Industrial zone into another part of the township. An expanded area was created just north of Newport Road due to the success of the current program.
- ⇒ Warwick Township created a second classification of commercial development listed as Local Commercial District. This area was established along the Route 501 corridor from the Lititz line at Weis Markets to the south at House of His Creation.



Second Friday is the highlight of each month, where the downtown comes alive with food, music, culture and shopping!

# REPORT TO THE COMMUNITY

## Economic Development

### DOWNTOWN:

- ⇒ Completed the Downtown Master Plan, winning the 2008 Lancaster County Envision Award.
- ⇒ Enacted the recommendation of a downtown Parking study in 2011 by adding signage in four new locations.
- ⇒ Establish Lititz design guidelines to mirror architectural styles and to permit innovation in meeting parking needs. Over \$60,000 has been granted to property owners and business owners for their façade improvements.
- ⇒ Venture Lititz, the Main Street program, has acquired over \$397,000 in grants for the community while also winning two awards for inter-municipal cooperation through the Lancaster County Downtown Consortium, the PA Downtown Center's Townie Award and the Lancaster County Envision Award.
- ⇒ Completed an audit of the zoning and subdivision ordinances to provide for mixed-use in Lititz, through form based codes . The New Lititz Ordinance won Lancaster County's Envision Award in 2010 and was described by the Awards committee as "enabling preservation by encouraging appropriate infill development opportunities and urban 'greening' initiatives."

#### "Like" us on Facebook!

- ◇ Lititz Farmer's Market
- ◇ Lititz, PA
- ◇ Downtown Lititz
- ◇ Lititz Public Library
- ◇ Lititz RecCenter



The Downtown Lititz Farmers Market marks its 5th year of bringing fresh, locally grown food to the community!

### TOURISM:

- ⇒ Venture Lititz works closely with the Lancaster County Heritage Planning and PA Dutch Convention and Visitor Bureau to produce guides and market the Lititz region to visitors, in turn economically benefiting our community.
- ⇒ In 2006, Lititz undertook a way finding sign project, which now serves as a model for smaller communities.



**Lititz was National Trust for Historic Preservation's, "Distinctive Destination" of 2009!**



# REPORT TO THE COMMUNITY

## Water Resource and Watershed Protection

Watersheds are a vital resource and need to be protected. Here it is a top priority and we work hard to see progress being made on the protection of our water resources. Perhaps that's the reason why Warwick Township and the Lititz Run Watershed Alliance were awarded the Chesapeake Bay "Conservationist of the Year". This recognition highlighted the considerable progress that has been modeled in the Lititz Run watershed in all areas including the agricultural, industrial and residential sections. Within the last five years, Lititz Borough and Warwick Township Municipal Authority (WTMA) completed a 14.7 million dollar upgrade to the wastewater treatment plant. This major investment addressed mandatory objectives established by the Chesapeake Bay Foundation by EPA and PA Dept. of Protection. WTMA will also be creating a second well for the Rothsville water system.



2010 'Conservationist Of The Year' award!



⇒ In 2011, Lititz was honored by winning a Smart Growth Leadership Award from the Lancaster County Planning Commission's Envision Lancaster Leadership Awards Program for the Butterfly Acres Aquifer Restoration Area (pictured on top left). This 2,300-foot-long restored natural area is a critical groundwater recharge area. Design and stabilization of the area resulted in soil enhancement, improved nutrient infiltration and groundwater filtration, improvement of water quality and reduction of storm water runoff, which in turn allows native plants to thrive and reduce short and long term maintenance because the area is naturally able to revitalize itself.



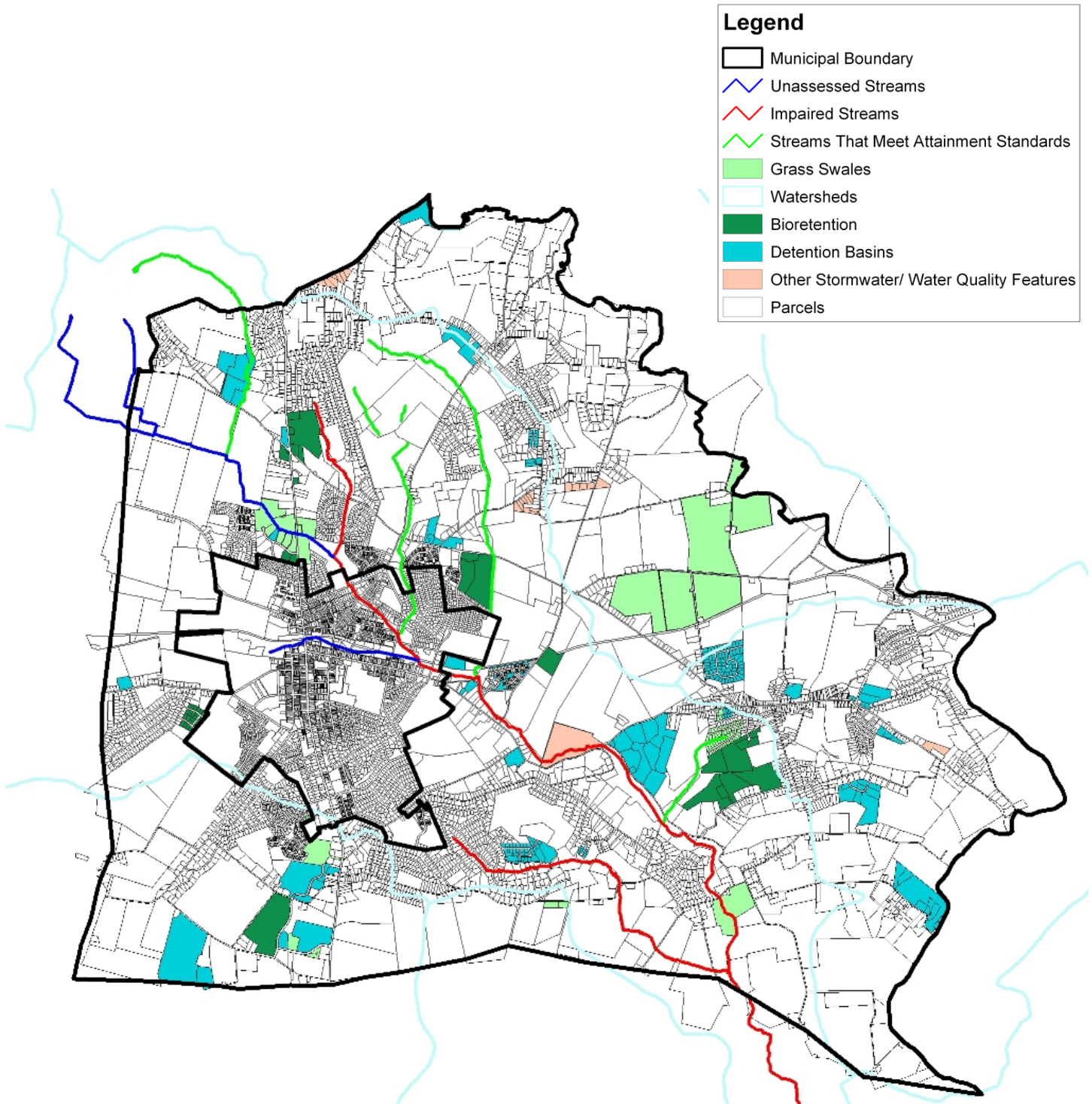
Since 1998, over 5,000 students from schools in the Warwick region have participated in LRWA Watershed day, giving students a chance for a more hands-on education about their water and environmental resources.

Pictured on the left are volunteers for the annual stream clean-up day, hosted by the LRWA, to help clean-up our waterways!



# REPORT TO THE COMMUNITY

## Lititz Run Watershed Quality



# REPORT TO THE COMMUNITY

## Recreation and Quality of Life

A well-rounded public recreation system can provide for the region in countless ways. Government entities working together with the private recreation sector, civic organizations, and non-profits provides the best level of service and facilities desired by the citizens of the region. The quality of life benefits that are provided by these services and facilities is hard to quantify, but easy to see why in the last 10 years the region has grown 10% to a population of 31,052. The greenways/trails, ball fields, open space/parks, cutting edge facilities and community events have made the region a must live area in Lancaster County.



The Warwick Regional Recreation Commission (WRRC) was formed in 2006 and is comprised of Warwick Township, Lititz Borough, Elizabeth Township, the Warwick School District and the Lititz RecCenter. The mission is to provide information, knowledge, and enhancement of parks and recreation opportunities for residents of the Warwick School District.

The WRRC completed their strategic plan in 2010. During a comprehensive evaluation of all facilities (including Warwick School District, Lititz RecCenter, and Elizabeth Township) there were over 21 new or renovated recreational facilities constructed within the last 9 years. The total value of these assets was established at \$10,138,295. Through in-house maintenance work, state and community grants, as well as in-

kind and financial contributions to these projects the actual savings by the WRRC Partners was significant. With a final net cost of \$5,594,856 we saved close to ½ the projected cost! A few of these projects include:



⇒ Built miles of trails, such as the Lititz/Warwick Trailway, Municipal Campus trail; and trails for Newport Square and Heart of Lancaster Hospital were built to provide connections to more schools, parks, residences, and businesses.

⇒ Rail corridor purchase and feasibility study done for a future rail trail from Lititz to Ephrata.

⇒ Upgrading old facilities such as Lion's park, New Street Park, and Linear Park.

⇒ Improving Warwick and Lititz School Campuses with new play equipment, open field and sports complexes.

⇒ In Lititz Borough, enhancements were made at the Lititz Springs Pool and new equipment for the skate park.

For more information go to:

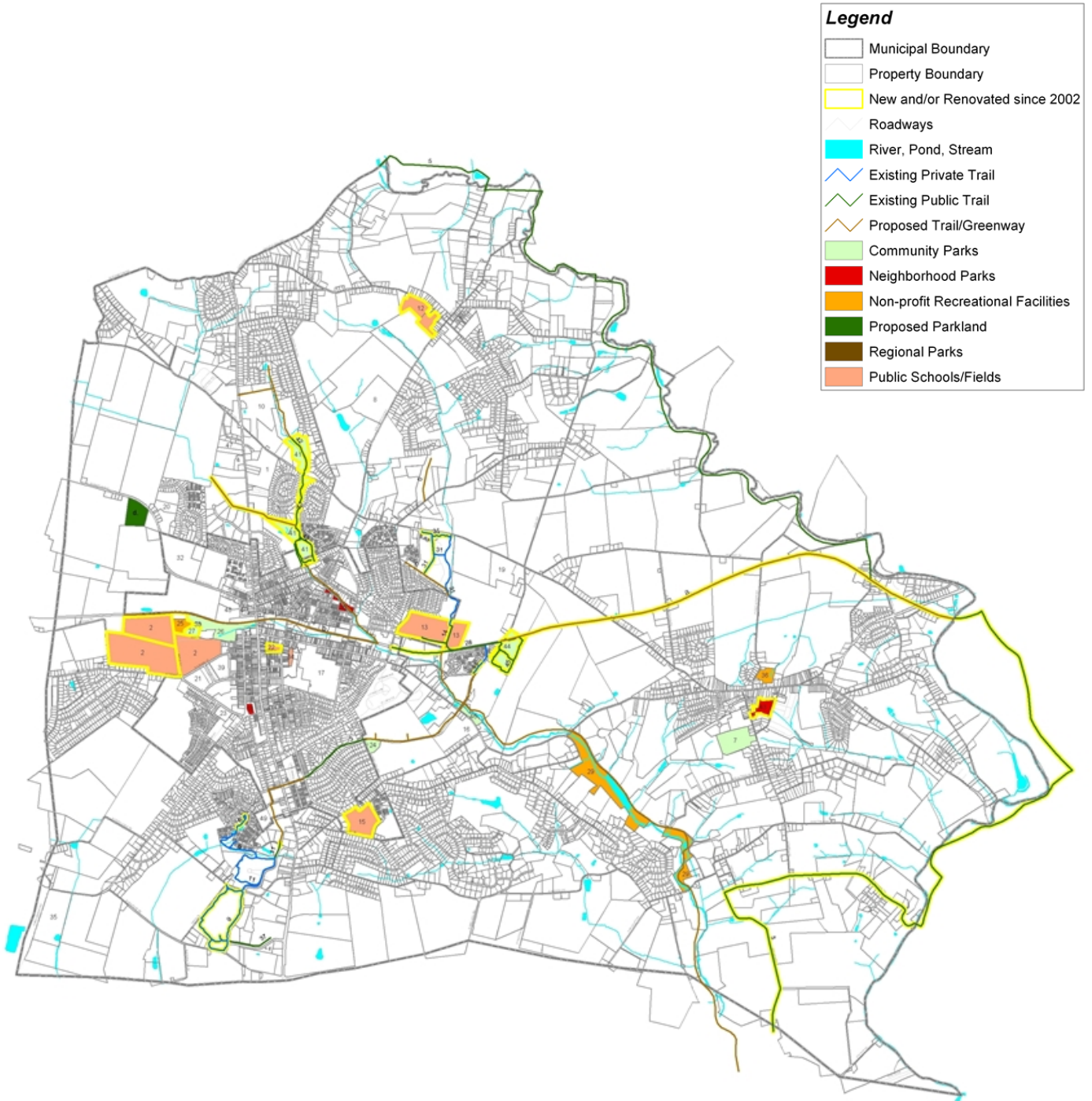
[www.gowrrc.com](http://www.gowrrc.com) or [lititzrec.com](http://lititzrec.com)





# REPORT TO THE COMMUNITY

## Recreation, Park and Open Space Plan



# REPORT TO THE COMMUNITY

## Land Preservation and Growth Management

From 2006-2011 the Lititz-Warwick region experienced much lower growth than in the 2000-2005 period. A more balanced portion of growth occurred with commercial and industrial increasing in growth over the 2006-2011 periods. Our agricultural preservation efforts yielded outstanding results. Thirteen farms have been preserved, totaling over 428 acres, all part of the transferable development rights (TDR) program. Warwick has the most successful TDR program in Pennsylvania for the most TDRs bought and sold. To preserve farmland, the TDR program permanently transfers densities and development from prime agricultural land to a campus industrial area. During this period, the township established a second campus industrial zoning district area in the northern section of the township.



### Warwick Total Housing Building Permits

2000-2005	2006-2011
893	92

In December 2011, the Township recognized three developers for their contribution toward farm preservation. The Heart of Lancaster Regional Medical Center, R.J. Waters & Associates, and Sechan Electronics (pictured below) purchased TDRs in order to construct their projects. Through money generated from TDRs, Warwick Township in partnership with Lancaster County Agriculture Preserve Board and Lancaster Farmland Trust preserved 17 farms. This example shows balanced growth between creation of community services, job opportunities, and preservation of farmland.



Three generations of farmers pose in front of their newly preserved land.



# REPORT TO THE COMMUNITY

## Agricultural Security and Farmland Preservation

### Legend

Warwick Twp.

### TDR Preserved Farms

Agricultural

Conservation

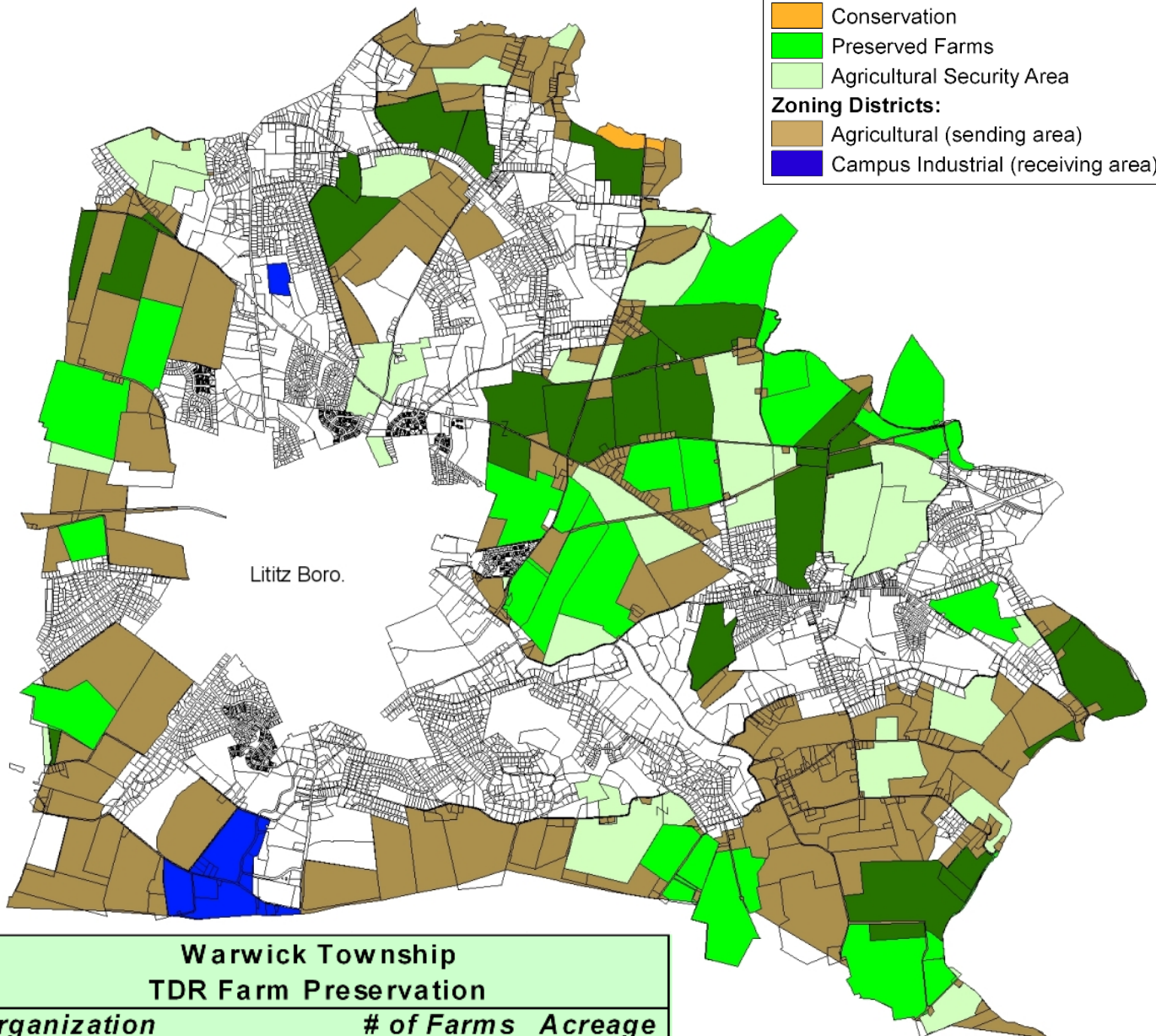
Preserved Farms

Agricultural Security Area

### Zoning Districts:

Agricultural (sending area)

Campus Industrial (receiving area)



Warwick Township TDR Farm Preservation		
Organization	# of Farms	Acreage
Agricultural Preserve Board	13	843.154
Lancaster Farmland Trust	8	487.698
Conservation Easement	1	18.805

**1,350 TOTAL ACRES**

Building a stronger community, together!



Lititz Borough  
7 South Broad Street  
Lititz, PA 17543  
717-626-2044  
[www.co.lancaster.pa/us/lititz](http://www.co.lancaster.pa/us/lititz)

Warwick Township  
315 Clay Road  
Lititz, PA 17543  
717-626-8900/Fax 717-626-8901  
[www.warwicktownship.org](http://www.warwicktownship.org)

Created by Brittany Smith